

Optional Accessories

SHAPING



KS-1 Softbox
for K4000 Power



HG-30 1 Honeycomb
for K4000 Power



HG-45 1 Honeycomb
for K4000 Power



FAF-1 Frame
for K4000 Power

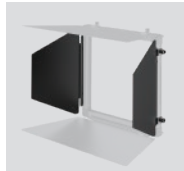


BK4-1 Barndoor Kit
for K4000 Power

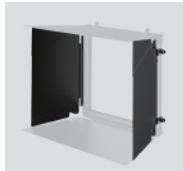
CASE



BST2-1 Barndoor Set
for K4000 Power



BSS2 Barndoor Set
for K4000 Power



BSS6 Barndoor Set
for K4000 Power



Pro Case
for 1 x K4000 Power



Pro Wheel Case
for 3 x K4000 Power

CONTROL



DMX Module



Wifi Module



Dedicated Controller



Wired Dimmer



Battery Plate
3-stud Gold Mount

POWER



Quick Start Guide



K4000 Power
LED Panel Light

- 1 Getting Started
- 2 Functions

What's in the box?



K4000 Power LED Panel Light



V-mount AC adapter
with Cable



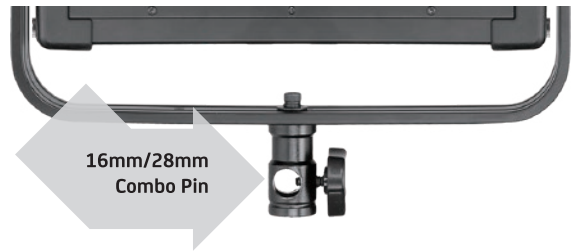
F&V Europe B.V.
Steenovenweg 5, 5708HN Helmond, The Netherlands
TM & © F&V All rights reserved.

For more information visit: fvlight.com

1 Getting Started

1 Mount

16 mm / 28 mm Combo Pin (Baby 5/8 inch / Junior 1-1/8 inch Combo Pin)



2 Power

Two power options

- 1 V-mount Li-ion battery
- 2 V-mount AC adapter

3 Let's do this!

Turn the light ON



V-mount Li-ion Battery
13-24 V

V-mount AC adapter
100 - 240 V

2 Functions



1 Adjust the Intensity

Use <Intensity> knob to adjust the intensity

2 *Adjust the Color Temperature (only the bi-color version)

Use <Color Temperature> knob to adjust the color temperature



Tips

How to mount the panel for use with softbox

