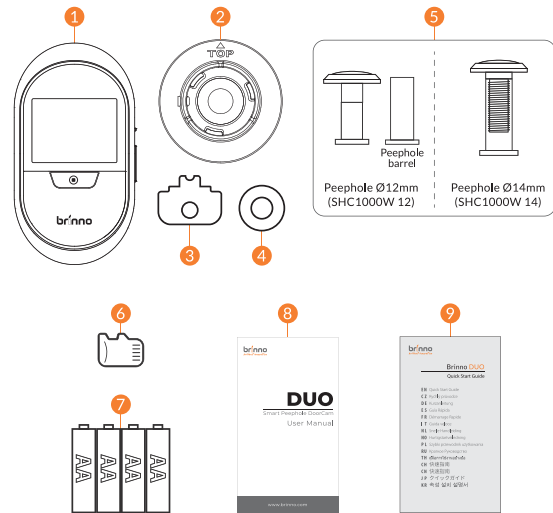


# DUO

## Smart Peephole DoorCam User Manual

www.brinno.com

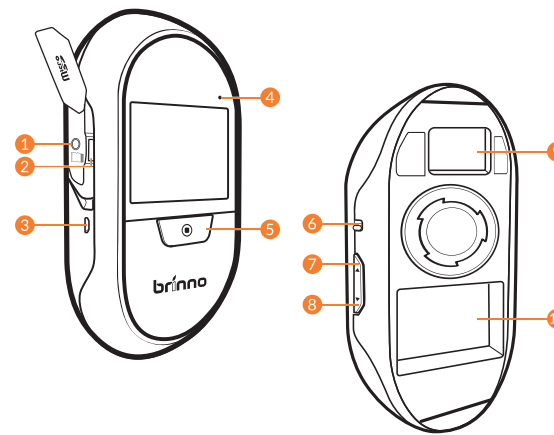
### In the Box



1. Brinno DUO
2. Base Flange
3. Tightening Tool
4. Washer (SHC1000W 12 only)
5. Peephole
6. microSD Card \*1 (installed in the camera)
7. 4 AA Batteries
8. User Manual
9. Quick Start Guide

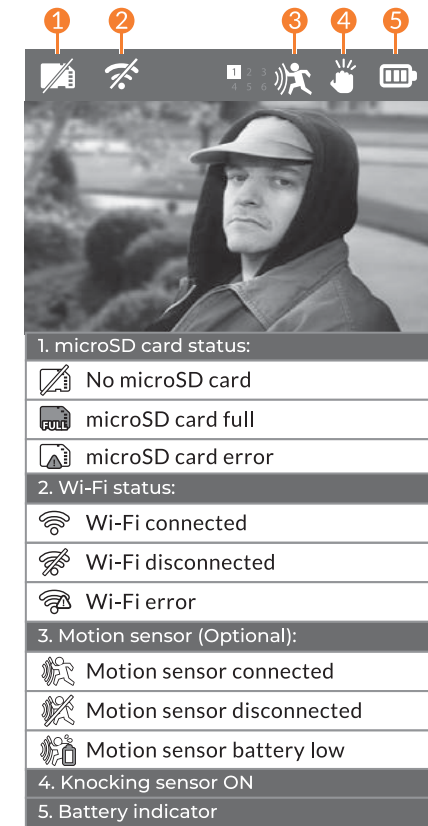
▲ Use Brinno's specially-designed optical grade lens peephole to get the best results.

### Device Parts



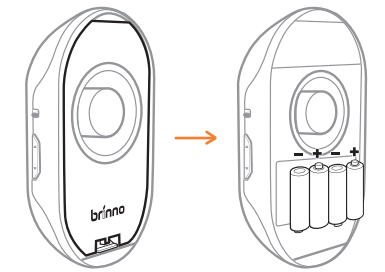
1. Locking screw.
2. microSD card slot.
3. Micro USB port.
4. LED Indicator:  
LED On: Battery low. Alert to replace the batteries.  
LED Flashing: Camera is capturing photos.
5. Live view/ Shutter button.
6. Power switch.
7. Playback / Up button.
8. Settings / Down button.
9. Extension port (for optional motion sensor).
10. Battery compartment.

### Display Icons

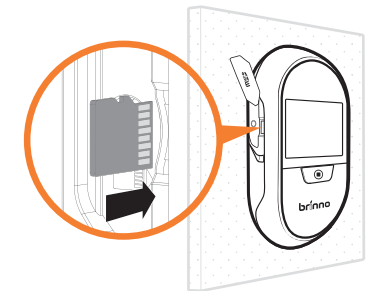


▲ When microSD card is full, please delete files to free up storage space.

### Install Batteries & microSD Card



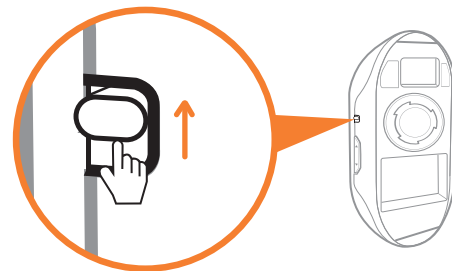
Open the battery cover. Then install 4 AA batteries.



Insert microSD card.

▲ Download all files from microSD card while replacing batteries.

### Turn on Camera



1. **Power ON**  
Turn on power. The LCD screen displays live view images at the doorstep.
2. **Power WAKE-UP**  
LCD screen is automatically turned off to save power when camera is not in use for 10 secs. Press **LIVE VIEW** button to wake up camera again.

### Menu Settings

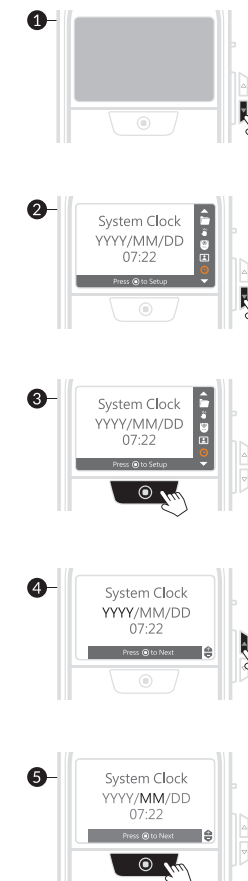
Press **DOWN** button to enter "MENU SETTINGS". (Press **UP** or **DOWN** button to browse setting options.)



- Browse Images**  
Replay visitor photos (details in Section 19- IMAGE PLAYBACK)
- Wi-Fi Status**
- Knocking Sensor**  
Auto capture photos when someone knocks on your door. (details in Section 20- ENABLE KNOCKING SENSOR)
- Motion Sensor**  
Auto capture photos when someone is near your front door. Refer manual of motion sensor(MAS200) inside the package for details.
- LCD Option**  
When LCD option is ON, the screen auto displays images if camera detects knocking on the door or motion outside the door (must with motion sensor). Setting LCD option OFF can save power and make battery last longer.
- Time Stamp**
- System Clock**
- Storage & Battery**
- Camera Info**  
Camera firmware version & Camera ID.
- Reset**  
Reset camera to factory settings.

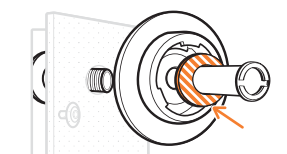
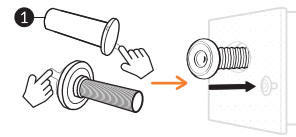
### Set Up Date & Time

1. Press **DOWN** button to go to "MENU SETTINGS".
2. On "MENU SETTINGS" screen, press **DOWN** button to go to the "System Clock" option.
3. On "System Clock" screen, press **SHUTTER** button to set date and time.
4. Change settings by pressing **UP** or **DOWN** button. Then press **SHUTTER** button to confirm and go to next option.
5. When finished, press **SHUTTER** button to return to "MENU SETTINGS".

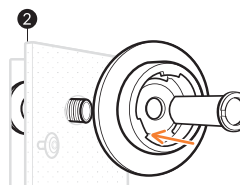


### Install Lens & Camera

1. Remove the protective film from the peephole lens. Insert it into the drilled hole on the door from outside.

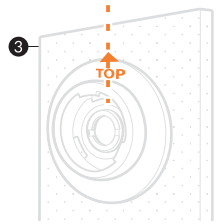
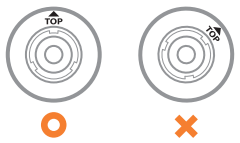


2. For the **12mm Peephole**  
Position the peephole barrel through the washer into the base flange from inside of the door. Tighten it. (for most North American users.)



- For the **14mm Peephole**  
Position the peephole barrel into the base flange. Tighten it.

3. Make sure the TOP icon is facing up.

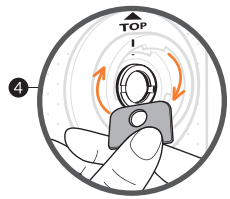


6. Attach the camera to the flange. Rotate it clockwise and lock the camera.

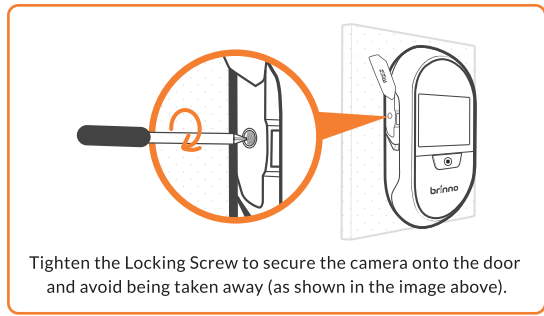


4. Use the tightening tool to tighten the peephole barrel.

Both sides of the tightening tool can be used.



5. Remove the protective film from the lens of the camera.



Tighten the Locking Screw to secure the camera onto the door and avoid being taken away (as shown in the image above).

## Live View & Capture Photo



### 1. Live View

Press **SHUTTER** button to turn on LCD screen and display images at your front door.

### 2. Capture Photos

When in **LIVE VIEW** state, press **SHUTTER** button to capture photos. (RED LED blinks when camera is recording. One recording takes 8 photos.)

## Auto Capture Photos

**TWO ways to auto capture photos:**

1. Triggered by **KNOCKING** detection:  
It is a built-in function of which the sensitivity level is adjustable (section **ENABLE KNOCKING SENSOR**).
2. Triggered by **MOTION** detection:  
It is a separate accessory you place outside on/near your door (details see MAS200 motion sensor manual).

### Power Saving Mode:

LCD screen is automatically turned off to save power when camera detects no activity for 10 secs.



## Image Playback

### 1. Auto Playback

When in **LIVE VIEW** state, press **UP** button to select Playback mode and auto replay daily visitor photos.

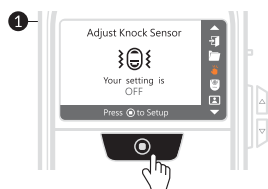


### 2. Manual Playback

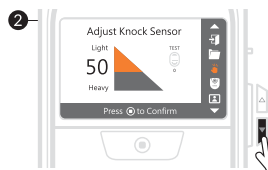
During auto playback, press **SHUTTER** button to pause. Press **UP** or **DOWN** button to manually view previous or next photo.

## Enable Knocking Sensor

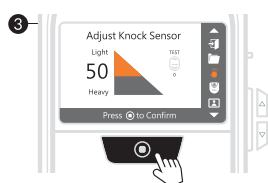
1. On Knock Sensor screen, press **SHUTTER** button to set up knock sensitivity.



2. Press **DOWN** button to enable knocking sensor. The sensitivity default is set at 50, the mid-level.

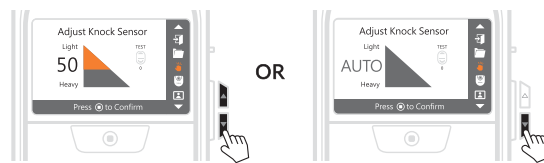


3. Press **SHUTTER** button to confirm and return to "MENU SETTINGS".



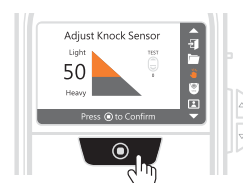
4. Adjust knock sensitivity:

If the knock sensitivity doesn't fit your needs, go to Knock Sensor setting screen to adjust knock sensitivity:



4-1. Press **UP** or **DOWN** button to increase or decrease knock sensitivity level, or hold **DOWN** button to **AUTO** mode, then knock on the door until the **TEST** icon flashes on.

4-2. Press **SHUTTER** button to confirm and return to "MENU SETTINGS".



## Specifications

	SHC1000W 12	SHC1000W 14
<b>Model</b>	SHC1000W 12	SHC1000W 14
<b>Peephole Barrel</b>	15/32"(12 mm)	5/9"(14 mm)
<b>Applicable Door Thickness</b>	1-1/8" to 2-1/4" (28~58mm)	1-3/4" to 3-1/8" (43~80mm)
<b>View Angle</b>	90°	
<b>Peephole Type</b>	Optical grade lens peephole	
<b>LCD Screen</b>	2.7" TFT	
<b>Storage</b>	microSD card (included) (support up to 32 GB. 8GB Class 10 is recommended.)	
<b>File Format</b>	JPEG	
<b>Power Source</b>	4AA batteries (included)	
<b>Wireless</b>	Wi-Fi (802.11 b/g)	
<b>App OS</b>	iOS 8.0, Android 4.4 or later	
<b>Operating Temperature</b>	32 °F ~ 113 °F (0 °C ~ 45 °C)	
<b>Size (WxHxD)</b>	3.4"x6.2"x1.3" (87 x 158 x 34 mm)	
<b>Weight</b>	6 oz (170 g) (without batteries)	
<b>Built in Sensor</b>	Knocking sensor	
<b>In the Box</b>	Peephole; Base flange; Tightening tool; microSD Card 4AA batteries; User manual; Quick start guide.	

## Register @online

[www.brinno.com/support/registration](http://www.brinno.com/support/registration)



For manuals in other languages, visit [www.brinno.com/support](http://www.brinno.com/support)

The product features, specifications sheets and instructions may differ from actual products. Please refer to Brinno official site for the latest version of user manual.

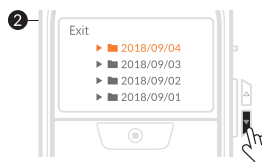
### 3. Playback by Date

3-1. When in **LIVE VIEW** state, press **DOWN** button to enter "MENU SETTINGS".



### 3-2. Select "Browse Images":

Press **SHUTTER** button to go to **DAILY FOLDER** screen. Select the desired daily folder and press **SHUTTER** button to auto replay photos.



### 4. Exit

During auto playback, hold **SHUTTER** button to return to **DAILY FOLDER** screen. Choose "Exit" and press **SHUTTER** button to exit and turn off LCD screen.

At pause mode, the LCD goes back to **DAILY FOLDER** screen when no activity for 15 secs.  
Image folders stored in the SD card can be accessed, edited or deleted on computer.

Setting knocking sensor too sensitive will add frequency of triggering. It will give you more alert messages and photos of your front door area, however, shorten your battery life.